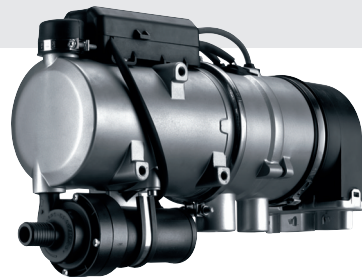


“Central Heating” for your vessel: Webasto water heaters

A hot shower and then a strong, hot cup of tea in your cosy cabin – what could be better when a cold wind outside is churning up the sea. A Webasto water heater system quickly heats the cabin of your sailing or motor yacht up to the temperature you require and also can assist in providing water for the shower and galley.

The advantages of Webasto's water heaters:

- **Separate temperature control in every cabin**
- **Even distribution of warmth by means of radiators**
- **Hot water for the shower and galley**
- **Low fuel consumption**
- **Supports dehumidification of the cabins**
- **Quiet-running**
- **Space-saving installation in the engine room**
- **Compact design**
- **Excellent possibilities for combining with Webasto Blue Cool Premium air conditioning systems**
- **Preheating of the engine possible to avoid cold starts**
- **Meet current requirements and standards relating to boats**



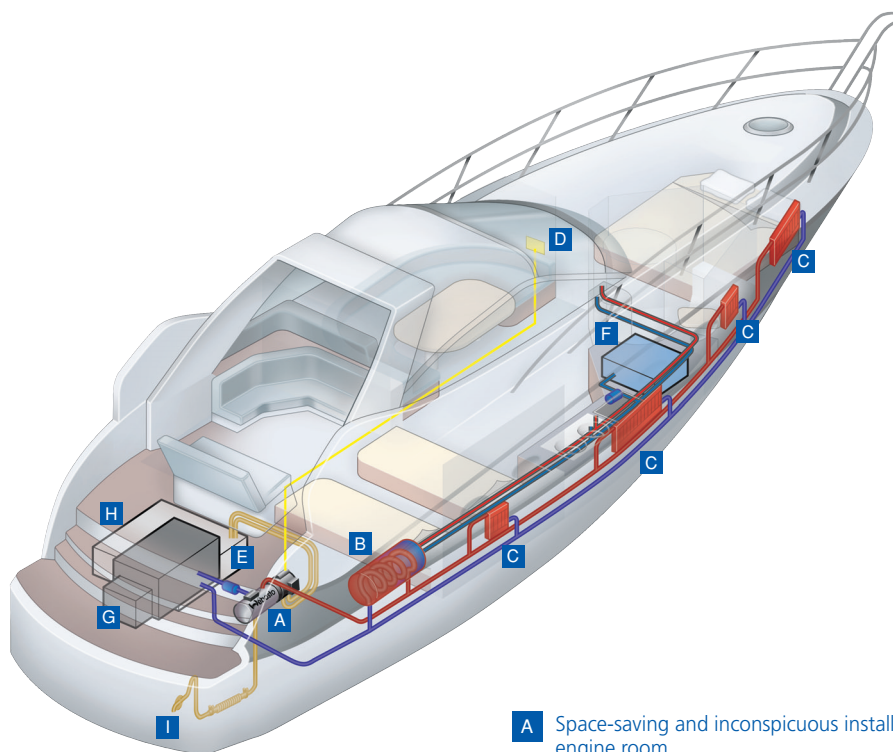
Thermo 90 S

This unit is ideal for everyday use: infinitely variable temperature control, high heat output, compact design, service-friendly technology and extremely low noise levels.



DBW 2010

The most robust unit on the market has more than proven itself over many years in service. Thanks to its high heat output of 11.6 kW, this water heating system is ideally suited to extreme conditions.



Installation example for water heating system

- A** Space-saving and inconspicuous installation in the engine room
- B** Boiler for heating hot water – for extra comfort
- C** Temperature of each radiator can be controlled separately
- D** Controls – simple and logical to use
- E** Circulating pump
- F** Hot water tank
- G** Engine
- H** Fuel tank
- I** Stainless steel exhaust

Water heater range

Unit	Voltage V	Heat output kW		Fuel consumption l/h		Fuel	Power consumption W		Dimensions l x w x h (mm)	Weight kg
		Partial load	Full load	Partial load	Full load		Partial load	Full load		
Thermo Top C	12	2.6	5.2	0.29	0.59	Diesel	32	42	214 x 106 x 168	2,9
Thermo Top 50	24	2.2	5.0	0.28	0.63		34	50		
Thermo 90 S	12/24	1.8 – 7.6 infinitely variable 9.1 booster speed		0.19 – 0.9 1.1		Diesel	37 – 83	90	355 x 133 x 232	4,8
DBW 2010	12/24	11.6		1.50			60	584 x 205 x 228		
Thermo 230	24	23		2		Diesel	65		610 x 246 x 220	19
Thermo 300	24	30		2.7			110			

The values stated include a tolerance of approx. ±10% typical for heaters. Subject to change without notice. Please note the installation specifications for the waters you cruise.

Advice · Installation · Service

Webasto AG
 Special Products & Markets
 P.O. Box 80
 82132 Stockdorf
 Germany
 Hotline: +49-0-395 5592-450
 Fax: +49-395-5 592 353

www.webasto.com