

## Onboard large central heating system: Webasto Water Station

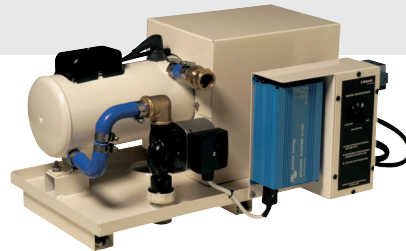
The Webasto Water Station acts as a central unit for the heating of the vessel's warm water heating system (such as radiators & fan heat exchangers). Additionally, domestic warm water is heated on demand using a Webasto Calorifier.

The Webasto Calorifier quickly and efficiently heats the domestic warm water by a separate coil from the engine and a coil from the Webasto water heater circuit. The additional electrical 230 V immersion heater ensures the provision of domestic warm water at shore connection.

The Thermo 230 has a summer/winter control. The DBW 2010 has a soundproofed housing to ensure a pleasant low-noise operation. The large Webasto water station consists of a Webasto water heating unit (DBW 2010, Thermo 230) with a fuel filter and a stopcock, as well as a very quiet 230 V Grundfoss circulation pump, all mounted on a stainless steel tray. This provides a quick and easy installation of the system (Plug & Heat).

### Advantages of the Webasto Plug & Heat System:

- Pre-mounted heating unit on stainless steel tray
- Complete system with pre-mounted wiring harness and control unit
- Product package contains 30 l water reservoir
- Tap water heating optional
- Simple to install
- Quiet 230 V circulation pump
- Stainless steel Calorifier with high quality insulation
- May be mounted horizontally or vertically
- 3 Heating options: Motor, water station, or generator/shore current supply



#### **DBW 2010 Water Station**

*This robust piece of equipment has proven itself through many years of use. The water heating system is especially suitable for demanding applications thanks to a high heat output of 11.6 kW.*



#### **Thermo 230 Water Station**

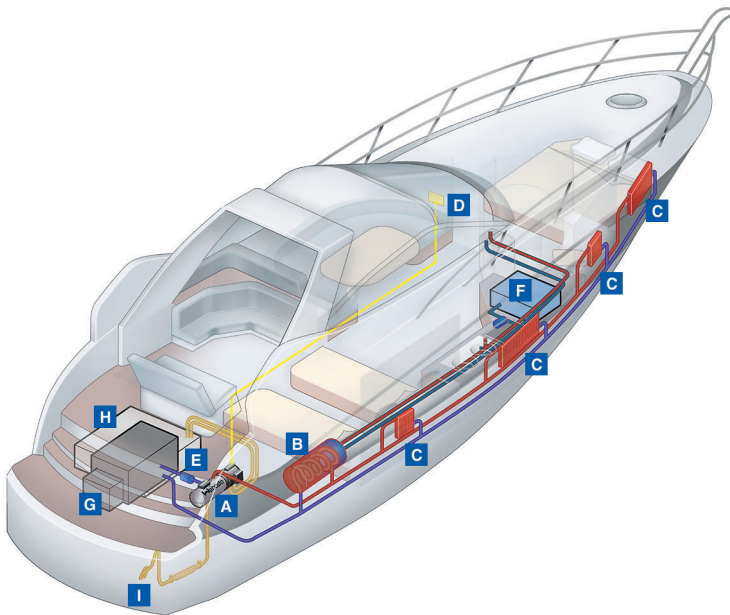
*This powerful and proven system has a heat output of 23 kW, and is suitable for heating larger boats and yachts.*



#### **Webasto Calorifier**

*With two heating coils and a 230 V electrical heating element at 800 Watt output. Available in 20, 30, 40 or 60 litres.*

## Installation example of a Webasto Water Station in a Motor Cruiser:



- A** Space-saving and unobtrusive installation in the engine room
- B** Calorifier for heating tap water for additional comfort
- C** Radiator temperature can be regulated individually
- D** Control units – simple and logical to use
- E** Circulation pumps
- F** Tap water tank
- G** Motor
- H** Fuel tank
- I** Stainless steel exhaust

## Specifications for Water Stations:

Model	Item No.	Voltage V	Heat output kW	Fuel usage l/h	Fuel type	Electr. power consumption W	Dimensions LxBxH mm	Weight kg
DBW 2010	32.00.57.8A	24	11.6	1.5	Diesel	120	640 x 420 x 310	26,5
Thermo 230	32.00.570.0A	24	23.0	2.0	Diesel	125	640 x 420 x 310	33.5

## Specifications for Webasto Calorifier:

Capacity	Item No.	Voltage V	Electr. power consumption W	Dimensions L x Ø mm	Weight kg (empty)
20 l	75.72.50.2A	230	800	500 x 400	9.0
30 l	75.72.50.3A	230	800	600 x 400	10.8
40 l	75.72.500.4A	230	800	650 x 400	13.3
60 l	75.72.500.6A	230	800	900 x 400	15.5

You will find Webasto installation partners on our web page or at the Hotline number shown below.

Webasto AG  
 Special Products & Markets  
 P.O. Box 80  
 D-82132 Stockdorf  
 Germany  
 Hotline: +49-(0)1805 707 400\*  
 Fax: +49 (395) 55 92-353  
[www.webasto.com](http://www.webasto.com)  
 \*(12ct./Min.)

Advice · Installation · Service