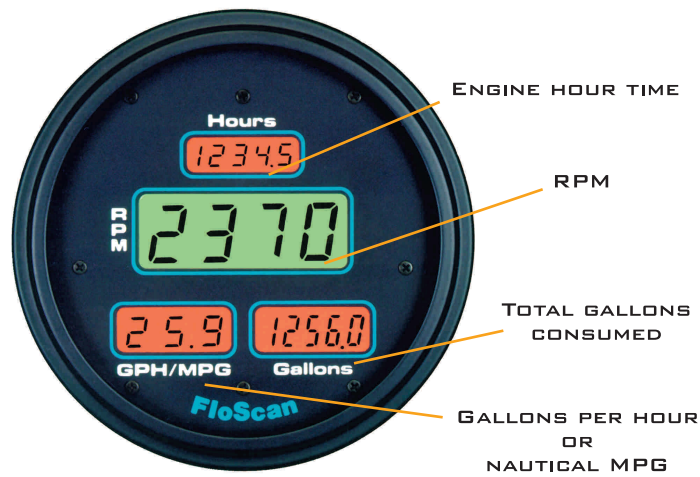


GPS INTERFACE SERIES

Our GPS Interface Model provides the same functions as the Series 7500/7600 instruments PLUS the important addition of nautical Miles-Per-Gallon. The boat speed over ground data required to calculate the MPG reading is obtained from a GPS with NMEA 0183 output. The direct display of MPG over the ground gives the skipper a powerful new tool to set optimum fuel efficiency under all conditions and to determine precisely how far he can go with his remaining fuel.

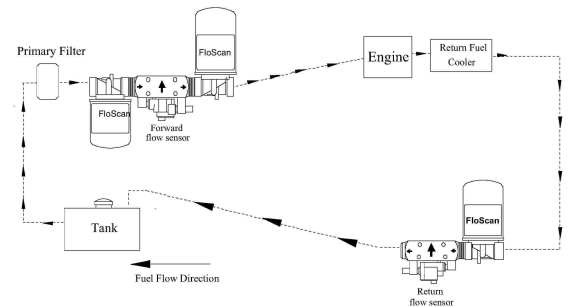
Easier-to-Install Series K Diesel System

The new Series K Diesel System represents a major breakthrough in diesel fuel management. The Series K system cuts the installation time and cost in half over previous diesel models. Separately mounted pulsation dampers are no longer required. New flow sensor design also enhances system performance and accuracy. Simplified procedures allow for do-it-yourself installation.

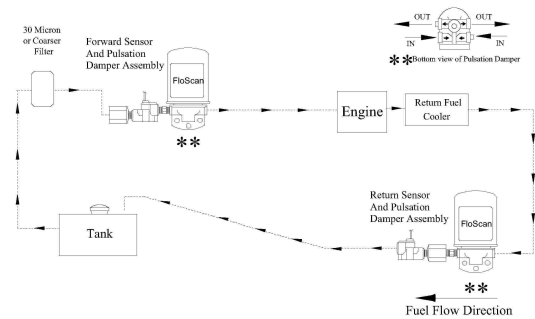


<h2 style="margin: 0;">SERIES</h2> <h1 style="margin: 0;">9500/9600</h1> <h3 style="margin: 0;">DIESEL MODELS</h3>			
Product Specs			
Engine type	Fits most diesel engines rated from 25 hp to 4300 hp. Twin diesels require two separate systems.		
System Electronics	Microprocessor based electronics with 2-stage adjustable calibration of GPH & Gallons used for superior accuracy.		
Model Specs	Provides the same functions as Series 7500/7600 PLUS the addition of nautical MPG. Boat speed over ground is obtained from GPS with NMEA 0183 output. Simultaneous, independent display of Engine Hour Time, Tachometer, Fuel Flowmeter, and Fuel Totalizer. RPM readout accurate to 1 RPM. GPH and Totalizer readings displayed in tenths of gallon. Totalizer capacity up to 99,999 gallons. Dual color backlighting of LCD provides for easy night viewing. External SPST switch (not supplied) required for resetting fuel totalizer reading.		
Meter Colors	Models available in black or white (bezel/dial).		
Meter Mounting	Meter fits 3-3/8" panel opening (standard tach size)		
Sensor Types	<p>Model 201/231 Series K Diesel Standard Flow Sensors are designed for feed and return flows in the range of 0.3 – 48 GPH. Standard Flow Sensors incorporate 1/4" NPT female inlet and outlet ports with 1 PSI or less pressure drop at rated flows.</p> <p>Model 233/236 Series K Diesel High Flow Sensors are designed for feed and return flows in the range of 30 – 400 GPH. High Flow Sensors incorporate 1" NPT female inlet and outlet ports with 1 PSI or less pressure drop at rated flows.</p>		
Model Number	<p>Popular Diesel Models</p> <table style="width: 100%; border: none;"> <tr> <td style="vertical-align: top;"> <p>950M-201-1K 950M-201-2K 950M-BOS-2K</p> <p>950M-231-2K 95TM-235-2K 960M-3BB-2K 960M-3CB-2K 960M-3DD-2K 96TM-6CC-2K 96TM-6DD-2K 96TM-6FE-2K</p> </td> <td style="vertical-align: top; border-left: 1px solid black;"> <p>Ford Lehman (all models) Yanmar 3JH/4JH2, Cummins 4BT3.9 Volvo 30/31/40/41 Series, Yanmar 4LH-STE, Yanmar 6LP-STE/STP, Hino (all models) Yanmar 6LY-STE, Volvo 60/61/70/71, CAT 3208 Caterpillar 3116/3126 Yanmar 6LY2-STE, Volvo 72/73/74 Cummins 6BT/6CT (all models), Yanmar 6CX-GTE MAN 2840/2842/2848, MTU 8V183TE/12V183TE Detroit 6-71N/6V92/8V71 Detroit 6-71T/8V92 Caterpillar 3500 Series, Detroit 16V92, EMD</p> </td> </tr> </table> <p>*See website for complete model selections and pricing.</p>	<p>950M-201-1K 950M-201-2K 950M-BOS-2K</p> <p>950M-231-2K 95TM-235-2K 960M-3BB-2K 960M-3CB-2K 960M-3DD-2K 96TM-6CC-2K 96TM-6DD-2K 96TM-6FE-2K</p>	<p>Ford Lehman (all models) Yanmar 3JH/4JH2, Cummins 4BT3.9 Volvo 30/31/40/41 Series, Yanmar 4LH-STE, Yanmar 6LP-STE/STP, Hino (all models) Yanmar 6LY-STE, Volvo 60/61/70/71, CAT 3208 Caterpillar 3116/3126 Yanmar 6LY2-STE, Volvo 72/73/74 Cummins 6BT/6CT (all models), Yanmar 6CX-GTE MAN 2840/2842/2848, MTU 8V183TE/12V183TE Detroit 6-71N/6V92/8V71 Detroit 6-71T/8V92 Caterpillar 3500 Series, Detroit 16V92, EMD</p>
<p>950M-201-1K 950M-201-2K 950M-BOS-2K</p> <p>950M-231-2K 95TM-235-2K 960M-3BB-2K 960M-3CB-2K 960M-3DD-2K 96TM-6CC-2K 96TM-6DD-2K 96TM-6FE-2K</p>	<p>Ford Lehman (all models) Yanmar 3JH/4JH2, Cummins 4BT3.9 Volvo 30/31/40/41 Series, Yanmar 4LH-STE, Yanmar 6LP-STE/STP, Hino (all models) Yanmar 6LY-STE, Volvo 60/61/70/71, CAT 3208 Caterpillar 3116/3126 Yanmar 6LY2-STE, Volvo 72/73/74 Cummins 6BT/6CT (all models), Yanmar 6CX-GTE MAN 2840/2842/2848, MTU 8V183TE/12V183TE Detroit 6-71N/6V92/8V71 Detroit 6-71T/8V92 Caterpillar 3500 Series, Detroit 16V92, EMD</p>		

K Series Hi Flow Sensor Plumbing Diagram



K Series Low Flow Sensor Plumbing Diagram



SERIES K HIGH FLOW SENSOR



SERIES K STANDARD FLOW SENSOR

