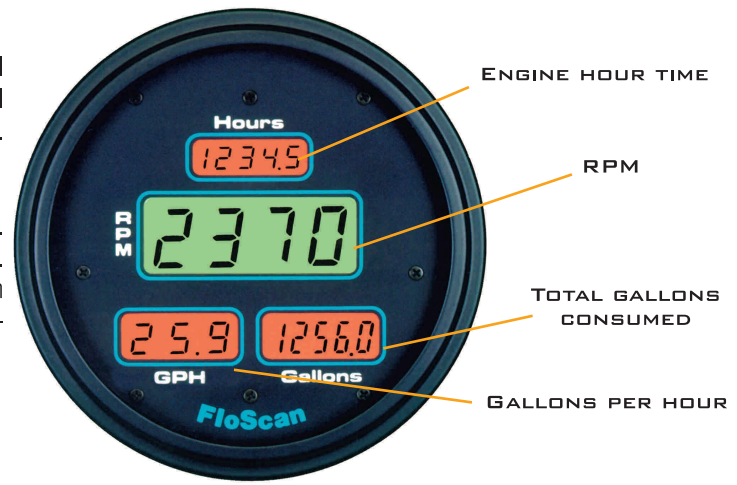


MULTIFUNCTION SERIES

Our Multifunction Meter combines a digital LCD Engine Hour Meter, Tachometer, Fuel Flowmeter, and Fuel Totalizer in a single 3-3/8" diameter instrument which fits the panel space of a standard tach. External switch required for resetting the Fuel Totalizer.

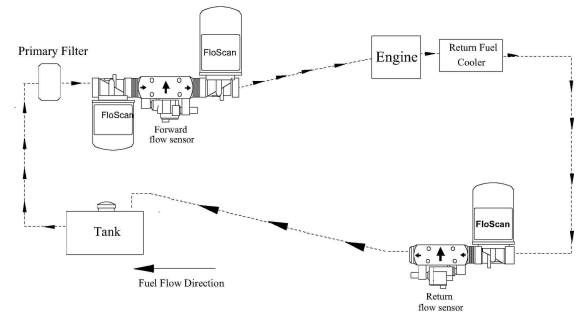
Easier-to-Install Series K Diesel System

The new Series K Diesel System represents a major breakthrough in diesel fuel management. The Series K system cuts the installation time and cost in half over previous diesel models. Separately mounted pulsation dampers are no longer required. New flow sensor design also enhances system performance and accuracy. Simplified procedures allow for do-it-yourself installation.

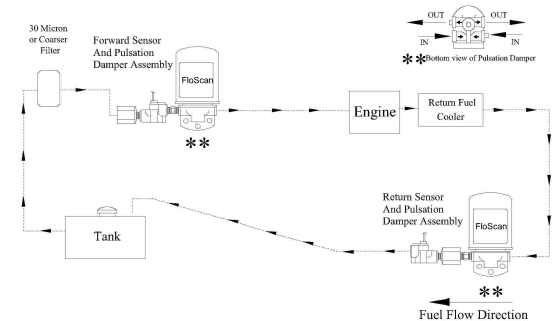


| Product Specs | SERIES 7500/7600 DIESEL MODELS | | | |
|--|--|--|--|---|
| Engine type | Fits most diesel engines rated from 25 hp to 4300 hp. Twin diesels require two separate systems. | | | |
| System Electronics | Microprocessor based electronics with 2-stage adjustable calibration of GPH & Gallons used for superior accuracy. | | | |
| Model Specs | Simultaneous, independent display of Engine Hour Time, Tachometer, Fuel Flowmeter, and Fuel Totalizer. RPM readout accurate to 1 RPM. GPH and Totalizer readings displayed in tenths of gallon. Totalizer capacity up to 99,999 gallons. Dual color backlighting of LCD provides for easy night viewing. External SPST switch (not supplied) required for resetting fuel totalizer reading. | | | |
| Meter Colors | Models available in black or white (bezel/dial). | | | |
| Meter Mounting | Meter fits 3-3/8" panel opening (standard tach size) | | | |
| Sensor Types | <p>Model 201/231 Series K Diesel Standard Flow Sensors are designed for feed and return flows in the range of 0.3 – 48 GPH. Standard Flow Sensors incorporate 1/4" NPT female inlet and outlet ports with 1 PSI or less pressure drop at rated flows.</p> <p>Model 233/236 Series K Diesel High Flow Sensors are designed for feed and return flows in the range of 30 – 400 GPH. High Flow Sensors incorporate 1" NPT female inlet and outlet ports with 1 PSI or less pressure drop at rated flows.</p> | | | |
| Model Number | <p>Popular Diesel Models</p> <table border="0"> <tr> <td style="vertical-align: top;"> 750M-201-1K 750M-201-2K 750M-BOS-2K 750M-231-2K 75TM-235-2K 760M-3BB-2K 760M-3CB-2K 760M-3DD-2K 76TM-6CC-2K 76TM-6DD-2K 76TM-6FE-2K </td> <td style="vertical-align: top; padding-left: 10px;"> Ford Lehman (all models) Yanmar 3JH/4JH2, Cummins 4BT3.9 Volvo 30/31/40/41 Series, Yanmar 4LH-STE, Yanmar 6LP-STE/STP, Hino (all models) Yanmar 6LY-STE, Volvo 60/61/70/71, CAT 3208 Caterpillar 3116/3126 Yanmar 6LY2-STE, Yanmar 6CX-EET, Volvo 72/73/74 Cummins 6BT/6CT (all models), Yanmar 6CX-GTE MAN 2840/2842/2848, MTU 8V183TE/12V183TE Detroit 6-71N/6V92/8V71 Detroit 6-71T/8V92 Caterpillar 3500 Series, Detroit 16V92, EMD </td> </tr> </table> <p>*See website for complete model selections and pricing.</p> | | 750M-201-1K 750M-201-2K 750M-BOS-2K 750M-231-2K 75TM-235-2K 760M-3BB-2K 760M-3CB-2K 760M-3DD-2K 76TM-6CC-2K 76TM-6DD-2K 76TM-6FE-2K | Ford Lehman (all models) Yanmar 3JH/4JH2, Cummins 4BT3.9 Volvo 30/31/40/41 Series, Yanmar 4LH-STE, Yanmar 6LP-STE/STP, Hino (all models) Yanmar 6LY-STE, Volvo 60/61/70/71, CAT 3208 Caterpillar 3116/3126 Yanmar 6LY2-STE, Yanmar 6CX-EET, Volvo 72/73/74 Cummins 6BT/6CT (all models), Yanmar 6CX-GTE MAN 2840/2842/2848, MTU 8V183TE/12V183TE Detroit 6-71N/6V92/8V71 Detroit 6-71T/8V92 Caterpillar 3500 Series, Detroit 16V92, EMD |
| 750M-201-1K 750M-201-2K 750M-BOS-2K 750M-231-2K 75TM-235-2K 760M-3BB-2K 760M-3CB-2K 760M-3DD-2K 76TM-6CC-2K 76TM-6DD-2K 76TM-6FE-2K | Ford Lehman (all models) Yanmar 3JH/4JH2, Cummins 4BT3.9 Volvo 30/31/40/41 Series, Yanmar 4LH-STE, Yanmar 6LP-STE/STP, Hino (all models) Yanmar 6LY-STE, Volvo 60/61/70/71, CAT 3208 Caterpillar 3116/3126 Yanmar 6LY2-STE, Yanmar 6CX-EET, Volvo 72/73/74 Cummins 6BT/6CT (all models), Yanmar 6CX-GTE MAN 2840/2842/2848, MTU 8V183TE/12V183TE Detroit 6-71N/6V92/8V71 Detroit 6-71T/8V92 Caterpillar 3500 Series, Detroit 16V92, EMD | | | |

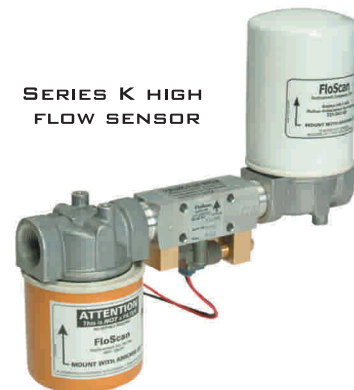
K Series Hi Flow Sensor Plumbing Diagram



K Series Low Flow Sensor Plumbing Diagram



SERIES K HIGH FLOW SENSOR



SERIES K STANDARD FLOW SENSOR