



 **FCI**
Watermakers
THE WORLD'S FINEST

EXCLUSIVE TECHNOLOGY



FCI Watermakers is dedicated to providing you with improved performance, features and dependability. In an on-going effort to stand behind our word the engineers at FCI have developed a design that has gone far beyond its initial expectation and goals! After many years of research and product development FCI is proud to continue offering the latest advancement in reverse osmosis systems, and bring you new technology—the UROC. This electronic Universal Reverse Osmosis Controller provides a user-friendly interface with customizable automatic operation for various applications and installations.



Monitor and access all of your system's controls using a personal computer and FCI software or ANSI Terminal Emulator.

The UROC control panel exhibits a full readout of system parameters on a back-lit, 4-line display. Select one of three Run Screens and it will give you temperature and pressure readings, feed and product TDS,

flow rates and much more. The UROC can be programmed to schedule unattended fresh water flushes. It automatically stage-starts the pumps for load considerations, primes itself and begins to make water. The technology even allows for setting the amount of gallons produced or run time limits.

Another exclusive feature of the UROC technology is the ability to program and operate your system from a remote display or computer. Once installed the unique desktop application provides all the operational parameters, readings and push-button controls needed to operate your watermaker. Just click the icon in the toolbar to access the controls. A second window in the program graphs useful, real-time system data and history. This information arms you with the ability to optimize system monitoring, schedule maintenance and determine why a fault condition may have occurred. With the UROC, watermaking has never been more simple and clear.



UNIVERSAL REVERSE
OSMOSIS CONTROLLER

117vac 28 PRIM
Low Press 30 psi
Reject 4.2 Gpm
Feed TDS 32674 p

PRIME screen: When the system is started, this screen indicates the low-pressure pump is running, displays system voltage, low pressure, reject rate and feed water TDS.

117vac 51 INIT
LP: 30 HP: 825
Reject 4.2 Gpm
Prod 1.04 Gp

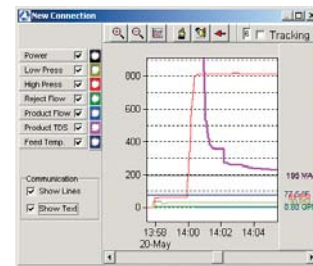
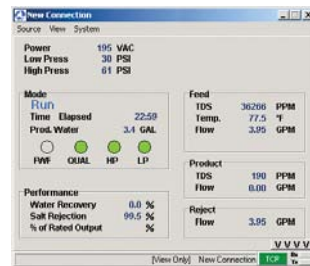
INITIATION screen: When all operation parameters are in line, the high pressure pump engages, the screen will display: system voltage, high and low pressure, reject GPM and production rate.

117vac RunTime
Hours= 275.8
Current= 52.0
Gals= 250.00

RUN TIME: Push the Run Time button and instantly get current run time, total system hours and the number of gallons made.



Additional UROC displays allow access to the same readings, set points and display screens as the main panel from remote locations. Run Screens will show pressure, production rates, water quality and more.



FCI software or ANSI Terminal Emulators provide all the operational parameters, readings and push-button controls needed to operate your watermaker from a computer, including real-time system data and history.

STANDARD CAPABILITIES:

- Over current protection and monitoring
- Pretreat lock-out— land-based systems
- Pump sequence times
- PPM divert point
- Remote display enabled or view-only part of display or remote feature
- Amount of gallons made or run time
- Pressure trip points
- Fresh Water Flush frequency and duration
- Alarm volume and backlight level
- ANSI Terminal Emulator access
- All flow units, pressures and temperatures can be read in english or metric units

DIGITAL DISPLAY READINGS:

- Inlet TDS, water temperature
- Low and high pressure
- Product and brine flow rates
- Total water produced each use
- Total hours run each use and for the life of the system
- Tank level control condition
- On-screen scrolling hints

SYSTEM ALARMS:

- Low and high pressure fault
- Low quality product water
- Production beyond rated capacity
- Over current condition



ACCESSORIES

FCI Watermakers carries a complete line of replacement parts, accessories and optional equipment that maintain the quality, reliability and efficiency that you have come to know and trust in FCI. So, the next time you perform routine maintenance, or would like to upgrade your Reverse Osmosis system, look to FCI Watermakers. The World's Finest.



Additional Displays enable you to program and access the system from a remote location.



FCI carries a complete line of replacement parts which include filters, membranes, hoses, fittings, spanners, o-rings and more.



Multi-media and Iron Removal Filters remove particulate or iron from the feed water stream. Filter includes valve tree assembly and stainless steel differential gauges.



Granular-Activated Charcoal Filters are great for post-tank filtration, and remove particulate, chlorine and other contaminants found in your fresh water holding tank.



Stainless Steel, Ultra-Violet Sterilizers provide 99.8% sterilization of bacteria and micro-organisms in water. Available in a variety of flow rates.